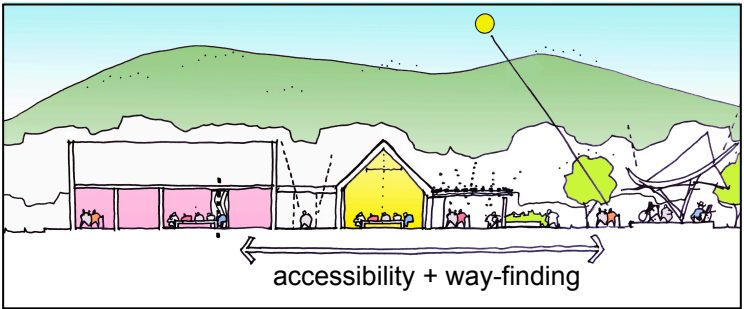


SITE RESPONSE

The proposed Care Hub is designed to create a large central landscaped accessible garden, with the woodland forming a natural backdrop.

The buildings are located to avoid existing services, to maximise south /south-westerly orientation and to form a visible focal point for the community.



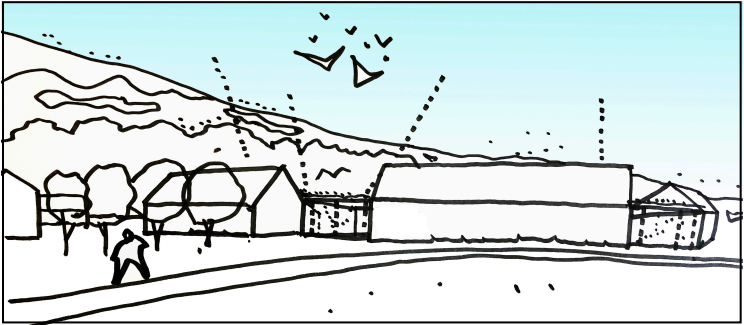
CONCEPT

Inspired by its rural context, the design comprises a series of simple barn-like forms connected by glazed links, all focused around a large central garden.

The principal spaces are arranged to benefit from a south/south-west orientation with a direct connection to the garden.

The FIT homes form a radial arrangement at the rear of the site, facing the garden and the main Care Hub.

The garden is zoned to encourage outdoor activities.



LOCAL PLAN

The site is covered by the Highland-wide Local Development Plan 2012 and West Highland & Islands Local Plan (Westplan) 2019. Under the HwLDP 2012 the site is identified as a local centre of local/regional importance. Under Westplan 2019 the site is not allocated for any specific development or use.

However, the 'placemaking principles' identified for Strontian include a desire to:

'Support aspirations for sheltered housing, an upgraded care home and doctor's surgery enabled by the relocation of the primary school.'



DAIL MHOR CARE HUB: CONCEPT + SITE RESPONSE

